



KELSIUS

**Foodservice,
Wholesale & Logistics**

**Digital Wireless
Temperature Monitoring Solutions**





KELSIUS

Company Story

Kelsius are Ireland's only manufacturer and provider of Wireless Temperature Monitoring and Digital Task Management systems and we take pride in being a Guaranteed Irish company.

Founded in 2003, Kelsius is a technology company that has a strong market presence in Ireland and the UK and exports their products and services to 47 countries across the globe.

Our customers range from restaurants, hotels and caterers to large supermarket chains and foodservice companies.

We are committed to continuous innovation and our systems utilise the latest technologies to provide peace of mind and easy-to-use systems to our customers.

Our customer support team offer unrivalled levels of service and can offer 365/24/7 support when required to global customers.



Our Mission:
To make the world
safer for consumers
of food and
medicine.

ISO9001:2015 Accredited

ISO14001:2015 Accredited

ISO 27001 compliance through our partners AWS

Kelsius system complies with FDA 21 CFR Part 11 regulations

Sustainability

Our Commitment

We are committed to improving global sustainability by focusing on four principles.

**Remove
Paper**



**Reduce
Waste**



**Protect
Stock**



**Save
Energy**



EcoVadis – Sustainability Silver Medal Certificate

Kelsius has been rated amongst the top 25% of global companies assessed by EcoVadis. The rating was achieved based on EcoVadis' evidence-based assessment of Kelsius in relation to its sustainability impacts.



Our Solutions

Reduce Food Waste

Every year, the billions of tonnes of food products that go to waste directly contribute to generating 8-10% of associated global greenhouse gas emissions. The vast majority of this waste is due to lack of cold chain traceability or incorrect storage temperatures.

Reliable temperature monitoring ensures storage units and stock are consistently kept at optimal temperatures removing the risk of stock being spoiled. This prevents large amounts of unnecessary food waste and the CO₂ emissions that come from that waste.

Reduce Paper Usage, Paper Waste and Paper Storage

The average small-medium business must have on average 10,000 sheets of paper available annually to conduct manual temperature monitoring, with each sheet taking 6-9 years to decompose.

Our systems remove the need for manual paper records therefore significantly reducing a company's paper and ink cartridge waste.

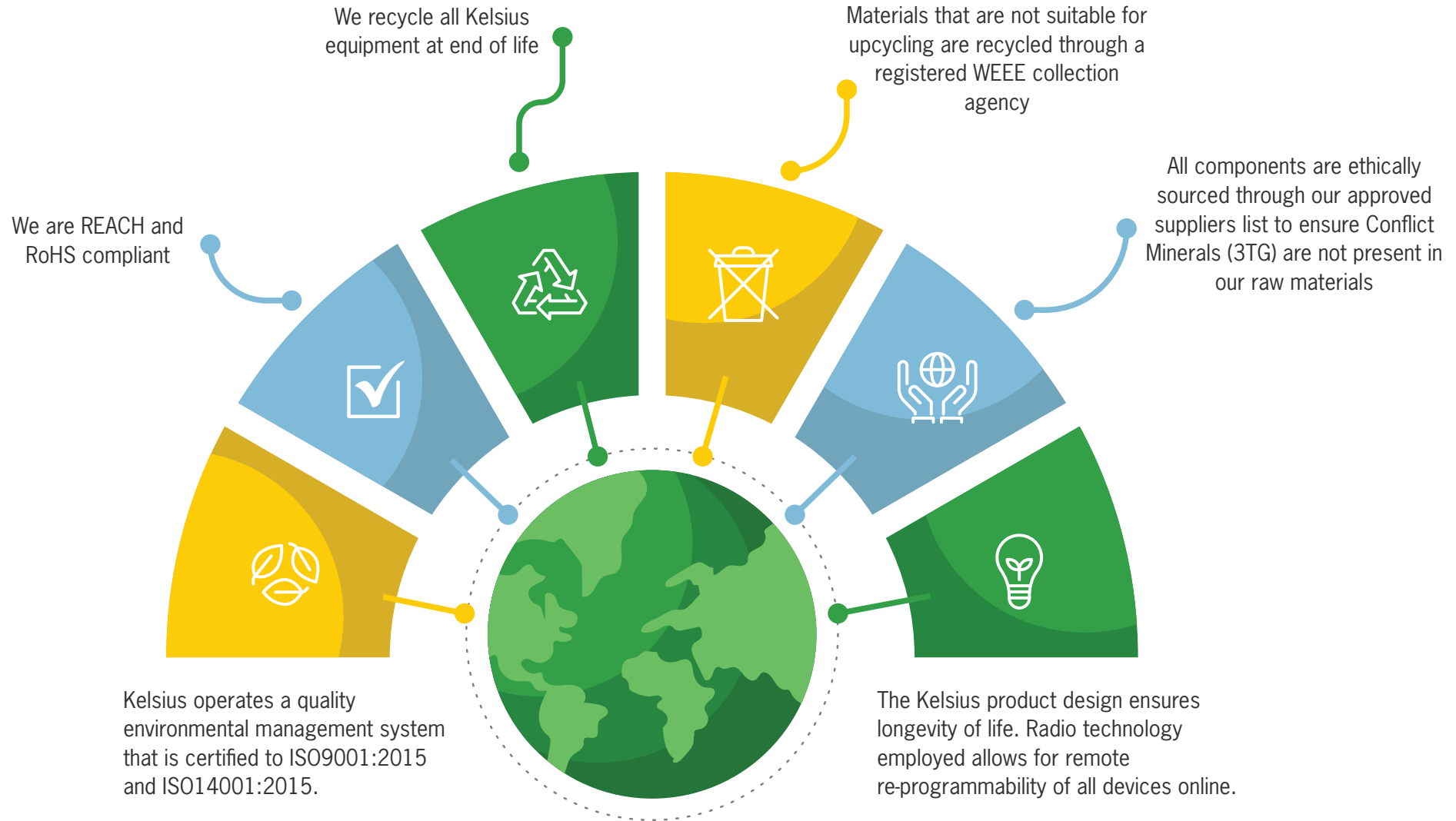
Save Energy

As well as using valuable resources such as land and water, the growing, processing and transportation of food that ends up as waste each year also uses significant amounts of energy.

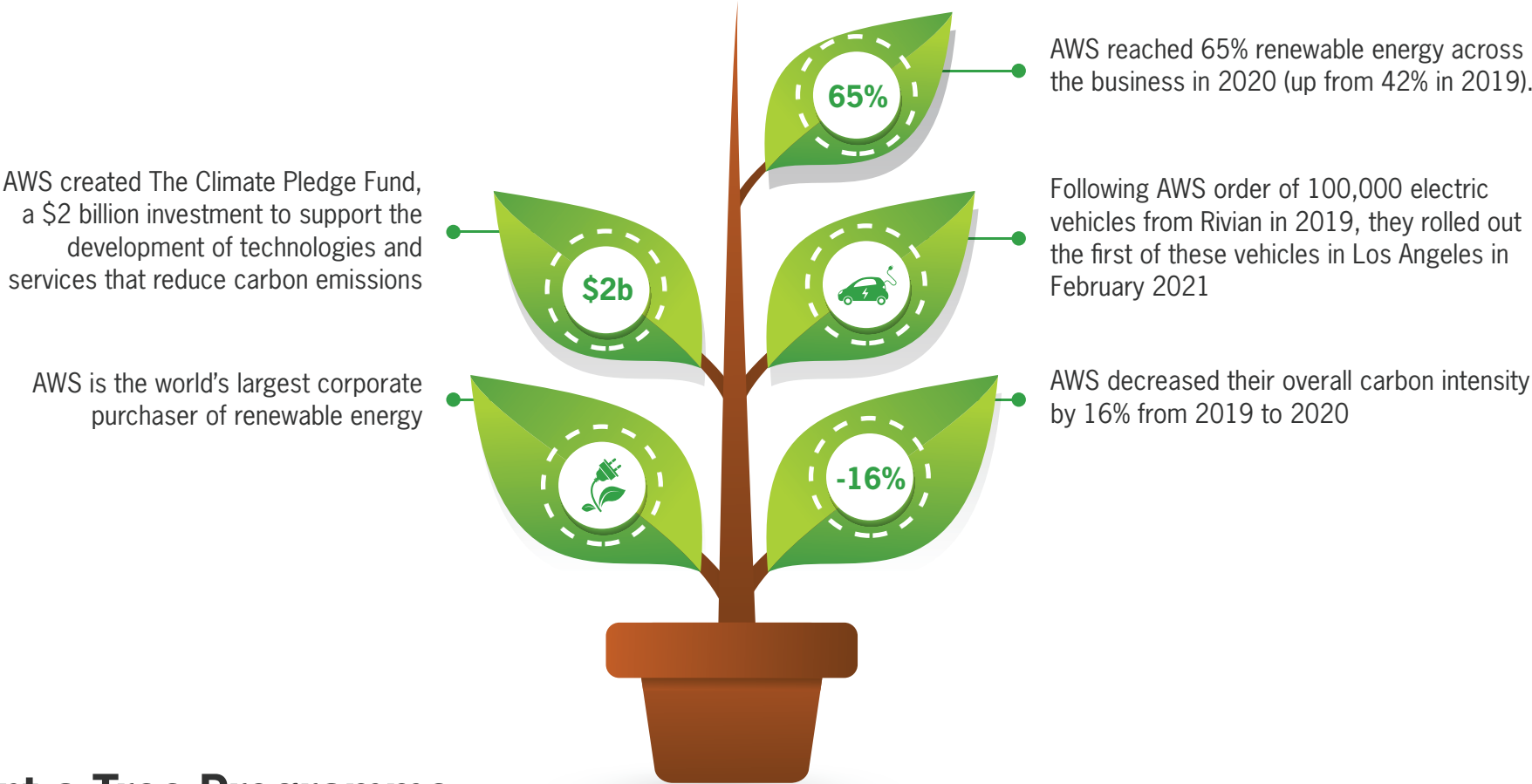
By reducing the amount of unused food, the Kelsius system ensures that this energy does not go to waste. The temperature monitoring system also allows for constant monitoring of your fridges, freezers and chill and cold stores, allowing you to ensure that temperatures are set at optimum levels to ensure your units are operating at the most efficient energy levels.

Our Contribution

Our contribution and responsibility is to reduce emissions and environmental impact across our operations.



With the requirement to maintain records for up to 30 years, data storage is a large and important part of our business. We chose Amazon Web Services (AWS) as data storage partner as a result of AWS' focus on Sustainability.



Plant a Tree Programme

Reducing global paper usage and waste is one of our main objectives as a company and to enhance this, we have decided to plant a tree for every new customer that comes on board. Trees remove carbon dioxide from the atmosphere, produce oxygen and support the building of biodiversity, so together we will be directly contributing to improving the environment.

Security



Security & Compliance with Kelsius

Your Data and Privacy are Protected and Secured

Kelsius develop secure software design practices that include defining security requirements, threat modelling, code reviews, vulnerability management, incident resolution management and security testing. There are controls in place to validate/reject access to the customer portals including multi-factor authentication, roles and permissions.

- GDPR Compliant
- Data processed and stored in the EU
- Data encrypted at rest (data storage) and in transit (data transfer)

Information is readily available

Daily and incremental backups allow data to be restored to any 5-minute period between backups. Data archived for more than 13 months can be restored from the portal at any time for audits of historical data and there is data retention for 30+ years. There's also an automated disaster recovery plan in place to ensure maximum uptime across 3 geographically dispersed data centre locations within Ireland.

- 24/7/365
- Alerts via push notifications/email/voice calls/SMS
- Self-healing data storage
- Automated crash recovery over multiple data centres



You are compliant

Kelsius complies with FDA 21 CFR Part 11 regulations – ISO 27001 compliance (AWS). A complete audit trail is available including user activity and change management audit records. There are multiple user roles to customise and control access to data and system configurations, and strong data governance where data is only accessible by the customer and a controlled small number of Kelsius employees.

Strong password policy is enforced and multifactor authentication is used to access the customer portal.



KELSIUS
Wireless Repeater

DO NOT UNPLUG
INPUT 12VDC 50 Hr Battery Backup

KELSIUS
Thermocouple
Temperature Sensor

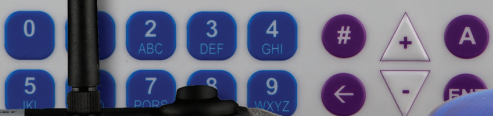
www.kelsius.com K105T

ON

KELSIUS



www.kelsius.com



Power 9-15 VDC

KELSIUS
Wireless Alarm

www.kelsius.com

KELSIUS
Wireless Temperature Sensor

KELSIUS

Wireless
Temperature Sensor

I-O

Industry Challenges

- To maintain food quality, reduce loss and waste, and comply with food safety regulations, it is critical that proper temperatures are maintained throughout the entire supply chain, while in storage and in transit.
- Quality and compliance break down when cold chain management breaks down.
- Temperature excursions can occur for a wide variety of reasons.
- Every time a product changes hands from grower or manufacturer to transit company to storage facility to distributor and finally onto retailer, there are multiple risks and times when a temperature excursion may occur.
- Operator error, refrigeration equipment malfunction, poor quality insulated packaging, vehicle breakdown, and poorly managed delivery and loading practices are just some of the potential points where failure can occur.

- With temperature being the single critical control point for all perishable food, managing your temperature records manually can be difficult to manage, and is open to human error.
- Any issues can lead to reduced food quality, changes in appearance, colour or taste, loss of food, contamination and even food poisoning.



The Solution

A key component to maintaining compliance and quality is temperature monitoring and record keeping. It is only through maintaining proper temperatures and records of those temperatures together with your preventative controls, processes, and corrective action procedures that you can prove you are in control of and managing food safety.

- CoolCheck ensures high quality food, reduces waste and drives compliance.
- The CoolCheck Temperature Monitoring Systems is a wireless system that monitors temperature and humidity in fixed static environments (i.e. warehouses, distribution centres, storage areas, food preparation areas and retail stores).
- CoolTrack sensors track the temperature and humidity of goods while they are in transit and outside of a controlled environment.
- When CoolTrack is returned to its docking station, data is automatically transmitted to the CoolCheck cloud. All temperature and humidity records are automatically uploaded to your individual portal, allowing for quick and easy access.
- CoolCheck and CoolTrack eliminate the need for paper records, removing the cost of paper, printing, ink cartridges, paper record storage and staff time spent on paperwork.
- Alerts via push notification, email, voice call or SMS will be sent to designated people any time a temperature excursion occurs.





The CoolCheck Temperature Monitoring System:

Whether in storage, in transit or on your supermarket shelves CoolCheck provides:

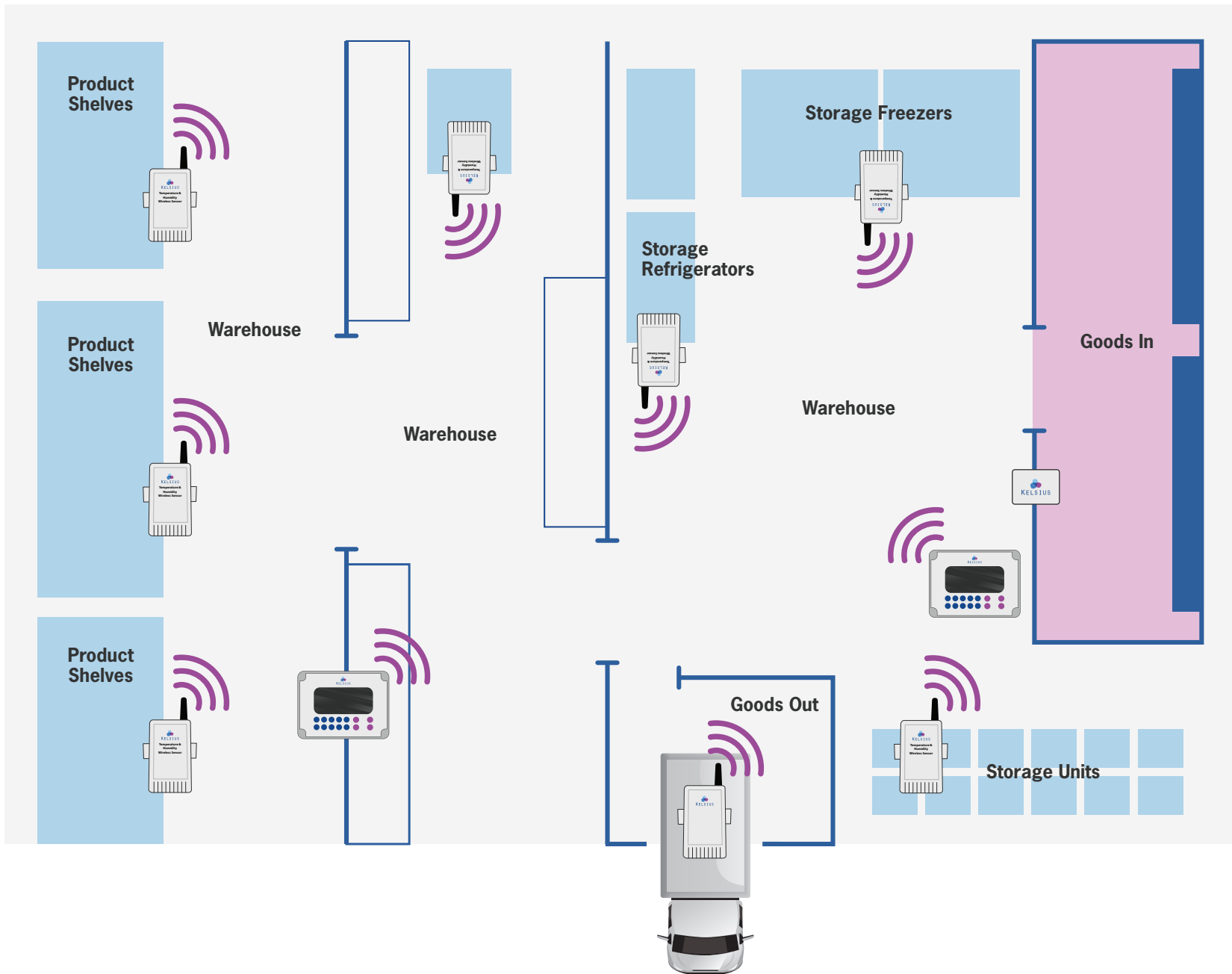
- the ability to track and monitor temperature-sensitive perishable food products.
- a flexible and wireless sensor network that supports both large and small environments.
- an easy-to-use, non-disruptive deployment - no need for expensive hard-wired infrastructure.
- full traceability of the cold chain management system.
- cost-effective, automated record-keeping which eliminates paperwork and manual checks and records and provides an easier and improved auditing process.
- secure, centralised, encrypted data that keeps your records safe.
- global access to information when and where you need it - by sensor, by room, by distribution centre.
- real-time alarming and alerting for temperature compliance and product quality assurance.

- improved visibility and compliance through online data history and audit trail.
- greater product quality and value - product losses and waste are reduced.

Lifetime Warranty

Eliminate system redundancy and end of life re-purchase costs. All Kelsius manufactured equipment including sensors, repeaters and network controllers come with a lifetime warranty during the term of your agreement. Items will be replaced with like-for-like or an upgraded version where an older part has been made redundant. New parts are manufactured to be backwards compatible with the existing system and software.





Wireless Temperature Sensor



CoolTrack Sensor



Network Controller



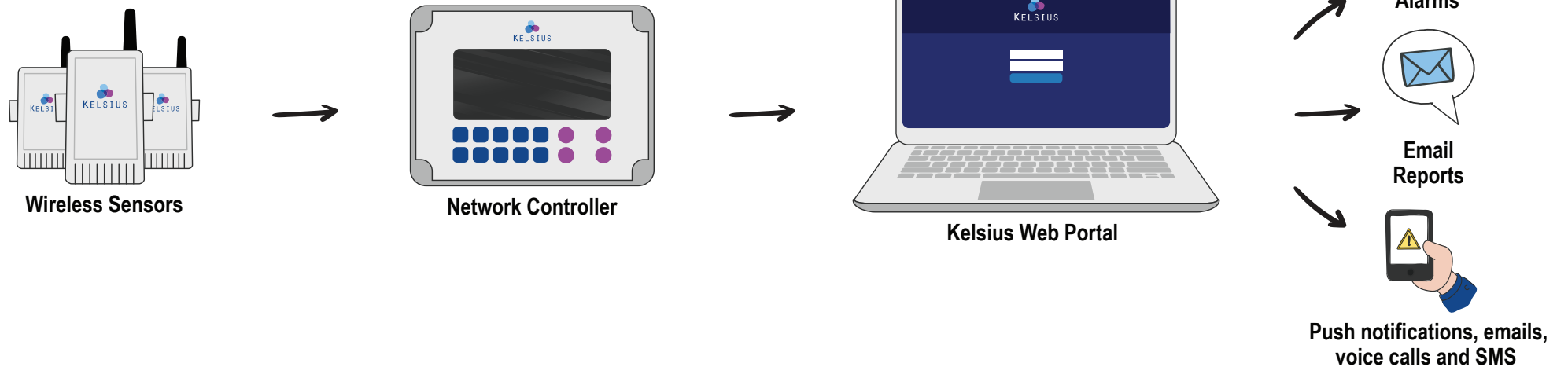
Cool Track Docking Station

CoolCheck Monitoring System at work:

CoolCheck is a fully integrated solution for facility temperature, humidity and condition monitoring which combines wireless sensors which are linked to their own network and web portal.

- CoolCheck wireless sensors are configured with user-defined alarm thresholds and measurement intervals. They are strategically placed inside any number of storage areas to record environmental conditions.
- CoolCheck wireless sensors record data and transmit the encrypted information wirelessly to a local Network Controller.
- The CoolCheck Network Controller relays the information to the Web Portal. All data is stored securely and is accessible to authorised users via a web browser; additional software is not required.

- The CoolCheck Web Portal provides immediate access to real-time and historical sensor data for all monitoring locations—and accessible from any web enabled device. Reports are available on demand or can be scheduled using a report wizard which will generate and distribute reports automatically via e-mail.
- When an excursion occurs, designated personnel can be alerted through audible/visual alarms, or automated app push notifications, emails, automated voice calls or SMS. Once a problem has been identified and corrective action has taken place, the incident can be recorded in the system's historical audit log.



Push Notification Alerts

Push notifications are a secure and reliable alternative to SMS or voice call alerts. Mobile phone network operators are increasingly treating automated SMS and automated voice calls as spam. This can result in the non-delivery of messages and in turn risks the user not receiving critical alerts of temperature excursions that could affect food quality and safety.

Push notifications are delivered via the Kelsius App and have multiple benefits for the foodservice industry and food distribution:

- **Encryption and Security:** The app uses more robust encryption protocols, providing a secure way to transmit information. This ensures that messages are less susceptible to interception, being isolated or not delivered, and are delivered in a reliable, consistent and dependable manner.
- **Two-Factor Authentication (2FA):** The app supports two-factor authentication, adding an extra layer of security. Users can receive secure authentication codes directly through the app, enhancing the overall security of the communication.
- **Delivery Confirmation:** The app provides delivery confirmation, letting users know when a message has been successfully delivered and when it has been read. This feature enhances reliability and helps users ensure that their messages reach the intended recipients.
- **Offline Message Delivery:** Push notifications are designed to be more reliable in delivering messages even when the recipient is offline. In addition, the app can store notifications until the user is back online, ensuring that important messages are not missed.
- **Remote Functionality:** Remote features include:
 - Secure login from any mobile device
 - Ability to select any individual alert event by entering a PIN
 - Ability to enter a predefined or custom corrective action
 - Ability to close the alert event without going back to office or a central location
 - App will report if alert notification was delivered, if it was opened and if it was actioned
 - All actions recorded and viewed on portal audit section
 - Provides improved traceability, convenience and saves time

Data at your Fingertips

The CoolCheck Web Portal makes data access and reporting easy. The portal's dashboard and site map provide immediate access to key information regarding the current state of all monitored locations. The dashboard highlights current sensor alerts, while the site map provides a quick overview of all sensors, their current readings, and their current status (e.g. normal, warning, or critical).

Information is delivered in the format your organisation prefers; data can be viewed on demand or downloaded in multiple formats (e.g., .pdf, .xls, .csv formats) for a given day, week, or specific time period. Reports can also be scheduled for automated daily/weekly electronic delivery through the Report Wizard.

Humidity						
Sensor Name	Min.(%)	Max.(%)	Average(%)	Standard Deviation	Total Records	
Sensor 1 (Basement)	41.5	53.3	45.4	3.3	293	
Sensor 2 (Basement)	42.0	53.8	45.9	3.1	293	
Sensor 3 (Warehouse - Basement)	0.0	0.0	0.0	0.0	0	
Sensor 4 (Warehouse - Basement)	41.0	53.3	45.2	3.4	292	
Sensor 5 (Warehouse - Basement)	42.0	53.7	46.0	3.1	293	
Sensor 6 (Warehouse - Basement)	0.0	0.0	0.0	0.0	0	

Secure Data, Real-Time Alerts

Alarming and alerting capabilities are key features of the CoolCheck system. The system can alarm on sensor-level readings (i.e. temperature excursions) or system-level issues such as damage to or removal of sensors, power failure, device malfunction, and network connectivity loss.

Each alert can be configured to notify designated personnel through a variety of methods:

- Audible/visual alarm beacons can be installed at various high-visibility points to alert on-site staff that an excursion or system-level issue needs attention. Beacons can be configured to alarm for an individual sensor or group of sensors.
- E-mails and text message alerts can be configured to reach designated personnel with information that includes the exact location and details of the alarm.
- Escalating, automated phone calls can also be made to designated personnel until someone logs in, investigates the alarm, and takes action.

Corrective actions can be used to document your process controls. Once an excursion has occurred, corrective actions can be entered by authorised users. A user can select from a pre-defined list or can manually enter a corrective action. Every corrective action is date and time stamped and includes electronic signatures.

In addition, all data transmissions are encrypted for security assurance.

Electronic record keeping ensures a robust audit trail. The CoolCheck system maintains a rigorous 21 CFR Part 11 compliant audit log, tracking user and system activities including configuration changes, user logins, alerts, and corrective actions.

Your data is secure using a variety of methods. Access is protected by username and password authentication. Depending on their responsibilities, personnel can be granted different levels of access including read-only, read/write or full access to add corrective actions and sign-off data. In addition, all data transmissions are encrypted for security assurance.



Your Data: Secure & at Your Fingertips

- Dashboard
- Site Map
- Sensor Graphs
- Alert Events
- Report Wizard
- Documents and Manuals
- Configuration
- Audit Trail
- User Profile

Customer Notice
Please note: Flashing icons representing outstanding Corrective Actions will appear in the device boxes below for a period of 7 days, after which the icon will no longer appear. All outstanding Corrective Actions are listed as normal in the Alert Events tab. We've introduced this change to greatly enhance the speed at which your Site Map loads

- WARNING** Sensor has been above the Warning threshold for longer than the delay period
- CRITICAL** Sensor has been above the Critical threshold for longer than the delay period
- MAINTAIN** Sensor is in Maintain Mode. No alerts will be generated while the sensor is in this mode
- ALARMOFF** Alarm has been turned off on this sensor
- SERVICE** Sensor is in Service Mode. After the Service Timeout this sensor will return to Normal No alerts will be generated while in Service
- MISREAD** Sensor has recorded a value which the system detects as a bad reading.
- COMMFAIL** Communication with this sensor has failed
- COMMISS** Temporary Communication failure with this sensor

Goods Inwards

Sensor 1 1 A 5.0 °C	Sensor 2 1 P 5.3 °C	Sensor 3 2 A 4.9 °C	Sensor 14 2 P 4.9 °C	MainsPower ON	Repeater 1 11.5 V.	Repeater 2 11.2 V.
---------------------------	---------------------------	---------------------------	----------------------------	------------------	-----------------------	-----------------------

Chilled Warehouse

MainsPower ON	Repeater 2 11.1 V.	Repeater 3 11.0 V.	Fridge 1 A 3.6 °C	Fridge 1 B 3.6 °C	Fridge 2 A 3.8 °C	Fridge 2 B 3.8 °C
------------------	-----------------------	-----------------------	----------------------	----------------------	----------------------	----------------------

Ambient Warehouse

Fridge A 6.1 °C	Fridge B 6.3 °C	MainsPower ON	Fridge C 5.2 °C	Fridge D 5.1 °C	Short Stay Fridge A 3.8 °C	Short Stay Fridge B 3.9 °C
--------------------	--------------------	------------------	--------------------	--------------------	-------------------------------	-------------------------------

Goods Out

Fridge A 3.6 °C	Fridge B 3.6 °C	Freezer A -18.0 °C	Freezer B -18.0 °C	Fridge C 5.1 °C	Fridge D 5.6 °C	MainsPower ON	Fridge E 5.4 °C
--------------------	--------------------	-----------------------	-----------------------	--------------------	--------------------	------------------	--------------------

CoolCheck Technical Specification

CoolCheck Wireless Sensor Specification			
	Temperature	Temperature and Humidity	Temperature and Door Ajar
Read Range (Line of Sight)	up to 100 m (328 ft)	up to 100 m (328 ft)	up to 100 m (328 ft)
Frequency Bands	868 or 915MHz	868 or 915MHz	868 or 915 MHz
Temperature Range	-35°C to +40°C (-31°F to +104°F)	0°C to +50°C (-32°F to +122°F)	-30°C to +40°C (-22°F to +104°F)
Temperature Accuracy	+ 0.5°C (+ 0.9°F)	±1.0°C (±1.8°F) [Range 0°C to +5°C (+32°F to +41°F)] ±0.5°C (±0.9°F) [Range +5°C to +50°C (+41°F to +122°F)]	+ 0.5°C (+ 0.9°F)
Temperature Resolution	0.3°C	0.1°C	0.3°C
Humidity Range	—	10% to 90%, non-condensing	—
Humidity Accuracy*	—	+5% <i>*RH Accuracy stated within Temperature Exposure Range of: 5°C to +50°C, Non-Condensing</i>	—
Humidity Resolution	—	0.1%RH	—
Data Storage	5,461 data points	5,461 data points	5,461 data points
Battery Life	5 years	5 years	5 years
Battery Type	Lithium TiCl 3.6V 2Ahr	Lithium TiCl 3.6V 2Ahr	Lithium TiCl 3.6V 2Ahr
Configurable Measurement Interval	5 to 100 minutes	5 to 100 minutes	5 to 100 minutes
Alarm Function	High/Low warning High/Low critical	High/Low warning High/Low critical	Door open alarm High/Low warning High/Low critical
Typical Dimensions	65 W x 50 H x 36 D (mm) (2.6 W x 2.0 H x 1.4 D (in))	65 W x 50 H x 36 D (mm) (2.6 W x 2.0 H x 1.4 D (in))	65 W x 50 H x 36 D (mm) (2.6 W x 2.0 H x 1.4 D (in))
Weight	108 g (3.8 oz)	113 g (4.0 oz)	108 g (3.8 oz)
Certifications & Industry Standards	NIST®/UKAS® traceable; Certificate of Validation	NIST/UKAS traceable; Certificate of Validation	NIST/UKAS traceable; Certificate of Validation

Device Output Power			
	Network Controller	Network Repeater	Standard Wireless Sensor
Output Power	200mW	1000mW	10mW







KELSIUS

kelsius.com

Email sales@kelsius.com

Web www.kelsius.com

Call 074 91 62982

Kelsius Ireland

Unit 2 Ballyconnell Industrial Estate

Falcarragh

Co. Donegal

Ireland

